

Know Cancer's Next Move

- > Does my patient need adjuvant chemotherapy?
- > Is the treatment working?
- > Is the cancer recurring?

Discover unique insights with molecular residual disease (MRD) detection, informed by ctDNA

AUTHORIZED DISTRIBUTOR



Signatera™
Residual disease test (MRD)

The LifeLabs Genetics logo features the word "LifeLabs" in a large, blue, sans-serif font with a red dot above the "i". Below it, the word "GENETICS" is written in a smaller, blue, all-caps, sans-serif font, with a red vertical bar inside the letter "I".

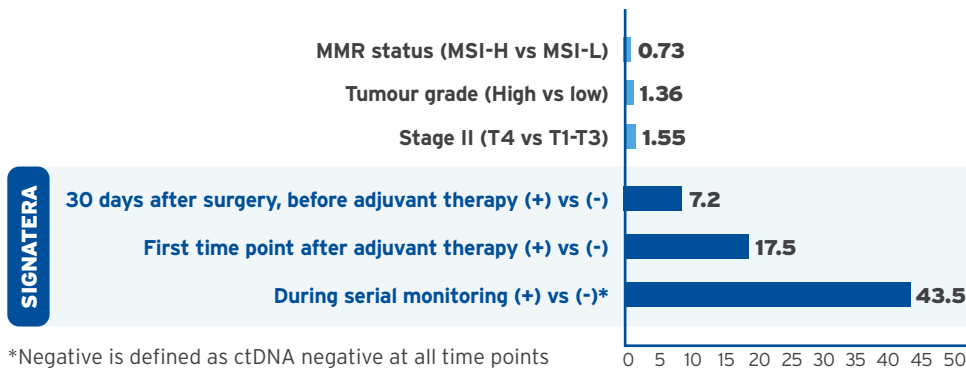
LifeLabs
GENETICS®

When to use Signatera™ for patients with CRC

In the adjuvant setting

Use after surgery to evaluate the need for adjuvant chemotherapy and potentially avoid unnecessary treatment

Signatera™ MRD status outperforms known clinicopathologic risk factors in predicting relapse¹⁻⁴



- > 97% of patients with a positive Signatera™ result relapsed without additional treatment¹
- > Serial testing improved sensitivity and negative predictive value of results

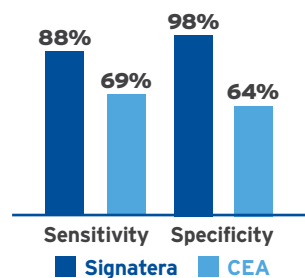
In the surveillance setting

Use along with CEA testing and other surveillance modalities to detect recurrence earlier, to enable surgical resection or other early intervention

Signatera™ was shown to detect relapse more accurately than CEA with clinically meaningful lead times over CT scans¹

- > Get clarity when evaluating patients with indeterminate CEA levels or CT scans
- > Signatera™ facilitates shared decision-making and confident treatment planning

Accuracy in detecting relapse



Average lead time of ctDNA detection before CT scan

8.7
MONTHS

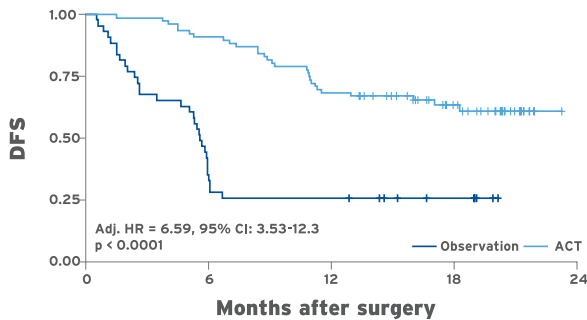
Maximum lead of 16.5 months

CEA = carcinoembryonic antigen; CT = computed tomography; ctDNA = circulating-tumour DNA

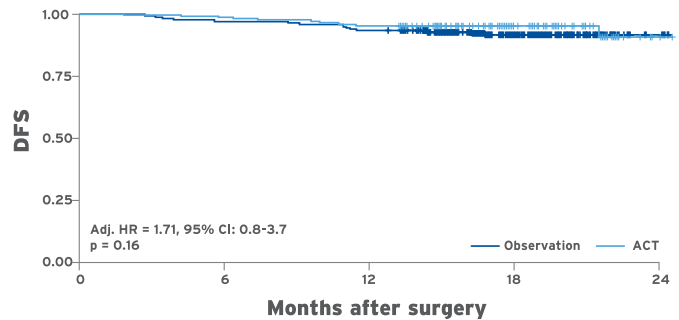
A large-scale prospective, MRD-guided study evaluated the clinical utility of ctDNA analysis in colorectal cancer (CRC)

MRD-positive CRC patients at 4 weeks post-op benefited significantly from chemotherapy while MRD-negative patients at 4 weeks post-op did not demonstrate any significant trend in treatment benefit⁵

MRD-positive patients at 4 weeks post-op



MRD-negative patients at 4 weeks post-op



Track ctDNA dynamics to enable longitudinal monitoring

- > Signatera™ reports presence/absence of ctDNA and ctDNA quantity in terms of MTM/mL for longitudinal assessment

Final Results Summary

Signatera™ Negative

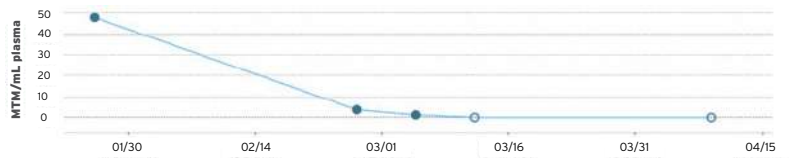


MTM/mL

Not Detected

Mean tumour molecules per mL is calculated based on the mean of ctDNA molecules detected per mL of the patient's plasma

Historical Results



MTM = mean tumour molecules

AUTHORIZED DISTRIBUTOR



Signatera™
Residual disease test (MRD)



Just like no two tumours are alike, Signatera™ is personalized for each patient



Tumour-informed MRD assay for individualized care

- > Customized for each patient's unique tumour signature using Whole Exome Sequencing (WES) to target the top clonal mutations



High sensitivity and specificity for accurate MRD assessment

- > By only tracking tumour-specific variants, sensitivity is optimized with a LOD down to 0.01% VAF⁶
- > Filters out germline and CHIP mutations to reduce background noise and to minimize false positives

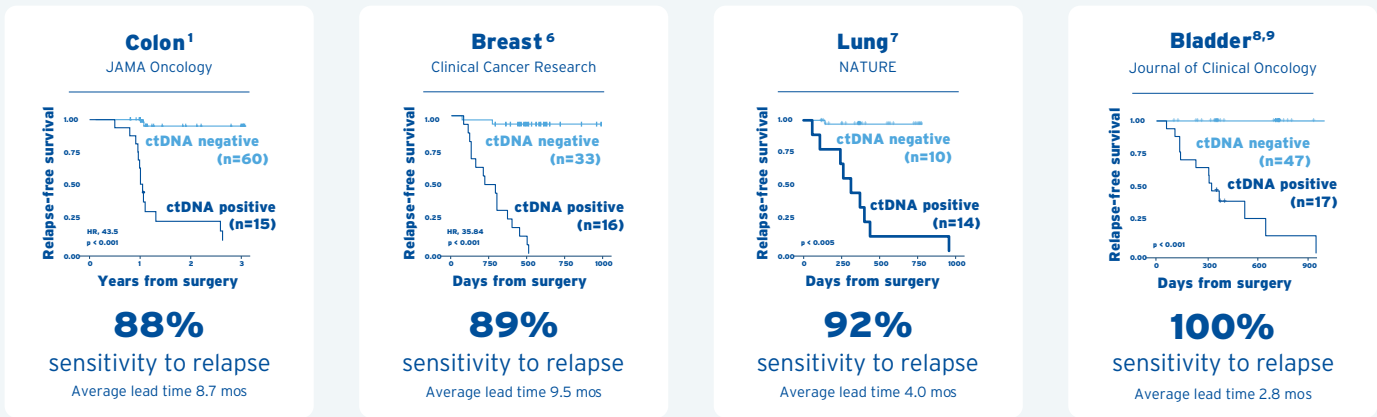


Reliable longitudinal monitoring for confident decision-making

- > Tracks ctDNA dynamics by MTM/mL to enable longitudinal monitoring with a simple blood draw
- > Follows clonal mutations that should persist as the tumour evolves

LOD = limit of detection; CHIP = clonal hematopoiesis of indeterminate potential; VAF = Variant allele frequency; WES = whole exome sequencing

Signatera™ is validated across multiple tumour types^{1,6-8}



LifeLabs Genetics
175 Galaxy Blvd., Suite 105,
Toronto, ON M9W 0C9
www.lifelabsgenetics.com/signatera



To place an order or learn more, contact our Genetics Team
Ask.Genetics@lifelabs.com
1-84-GENE HELP (1-844-363-4357)

References

- Reinert T, Henriksen TV, Christensen E, et al. Analysis of Plasma Cell-Free DNA by Ultradeep Sequencing in Patients With Stages I to III Colorectal Cancer. *JAMA Oncol.* 2019.
- Sinicropo FA, Foster NR, Thibodeau SN, et al. DNA Mismatch Repair Status and Colon Cancer Recurrence and Survival in Clinical Trials of 5-Fluorouracil-Based Adjuvant Therapy. *J Natl Cancer Inst.* 2011;103(11):863-875.
- Aoyama, Oba K, Honda M, et al. Impact of postoperative complications on the colorectal cancer survival and recurrence: analyses of pooled individual patients' data from three large phase III randomized trials. *Cancer Med.* 2017;6(7):1573-1580.
- Yothers G, O'Connell MJ, Lopatin M, et al. Validation of the 12-gene colon cancer recurrence score in NSABP C-07 as a predictor of recurrence in patients with stage II and III colon cancer treated with fluorouracil and leucovorin (FU/LV) and FU/LV plus oxaliplatin. *J Clin Oncol.* 2013;31(36):4512-4519.
- Kotani D, et al., Molecular residual disease and efficacy of adjuvant chemotherapy in patients with colorectal cancer, *Nature Medicine* v29 Issue 1 Jan 2023
- Coombes RC, Page K, Salari R, et al. Personalized Detection of Circulating Tumour DNA Antedates Breast Cancer Metastatic Recurrence. *Clin Cancer Res.* 2019;25(14):4255-4263.
- Abbosh C, Birkbak NJ, Wilson GA, et al. Phylogenetic ctDNA analysis depicts early-stage lung cancer evolution. *Nature.* 2017;545(7655):446-451.
- Christensen E, Birkenkamp-Demtroder K, Sethi H, et al. Early Detection of Metastatic Relapse and Monitoring of Therapeutic Efficacy by Ultra-Deep Sequencing of Plasma Cell-Free DNA in Patients With Urothelial Bladder Carcinoma. *J Clin Oncol.* 2019;37(18):1547-1557.
- Data on file

AUTHORIZED DISTRIBUTOR



Signatera™
Residual disease test (MRD)

Natera™ is CAP accredited and ISO 13485 and CLIA certified. Natera™ and Signatera™ are trademarks of Natera Inc., are used with permission and comply with Natera™ Branding Guidelines. LifeLabs Genetics is an authorized collector of Signatera™ test samples and distributor of Signatera™ test reports in Canada. Natera™ and LifeLabs® respectively will exercise all reasonable skill and care in the collection, transportation, handling and analyzing of Signatera™ test samples and production of Signatera™ test reports but neither guarantee nor warrant the production of a particular test result or report. LifeLabs is a registered trademark and LifeLabs Genetics is a trademark of LifeLabs LP. LifeLabs LP © LifeLabs 2022.



LifeLabs Genetics Signatera™ Physician Brochure | VER 1 JAN 2023

Reduce chemotherapy in colorectal cancer

Signatera™

May help up to **30%** of
colorectal cancer **patients**
avoid unnecessary
chemotherapy

AUTHORIZED DISTRIBUTOR



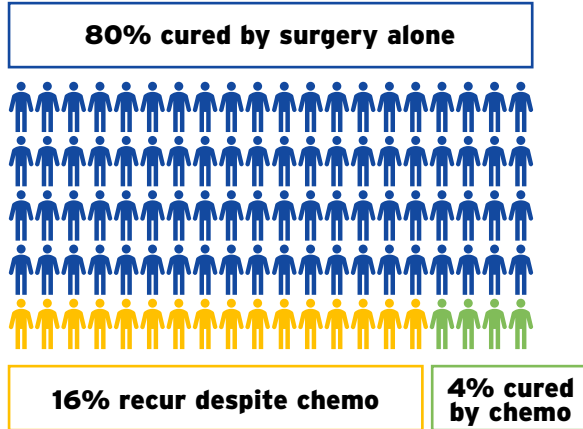
Signatera™
Residual disease test (MRD)

The LifeLabs Genetics logo features the word "LifeLabs" in a large, blue, sans-serif font with a red dot above the "i". Below it, the word "GENETICS" is written in a smaller, blue, sans-serif font, with a red vertical bar above the letter "I".

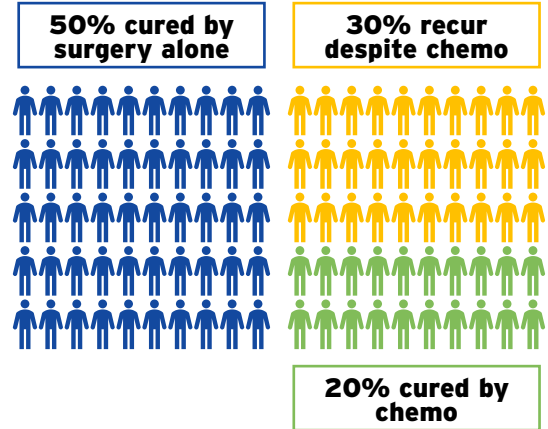
LifeLabs
GENETICS®

Signatera in the Colorectal Cancer (CRC) adjuvant chemotherapy setting

Stage II



Stage III



Results from clinical trials suggest that assessing for residual disease by Signatera can help avoid unnecessary adjuvant chemotherapy treatment in up to 30% of CRC patients¹ and decrease debilitating toxicities such as peripheral neuropathy²

Signatera is available in Canada:

 [Order online](#) (ON residents)

 [Order online](#) (BC residents)

 All Canadians can order over the phone: 1-844-363-4357

 Or via email: Ask.Genetics@LifeLabs.com

AUTHORIZED DISTRIBUTOR

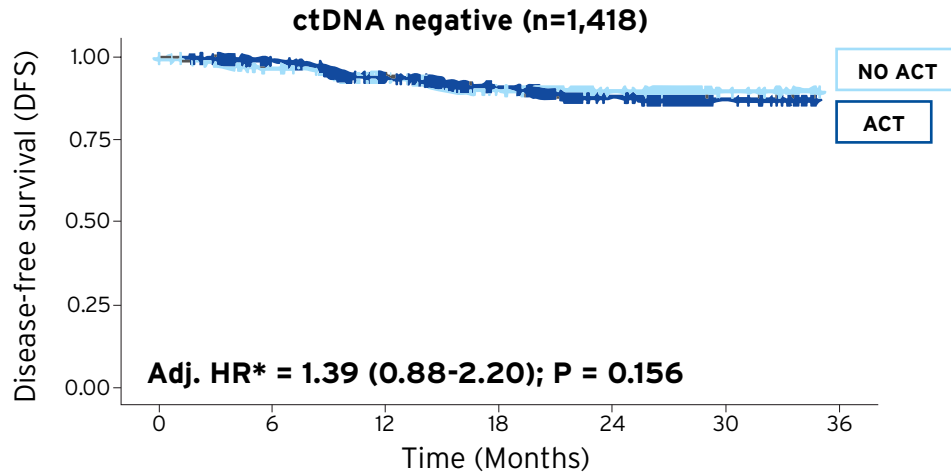


Signatera™
Residual disease test (MRD)

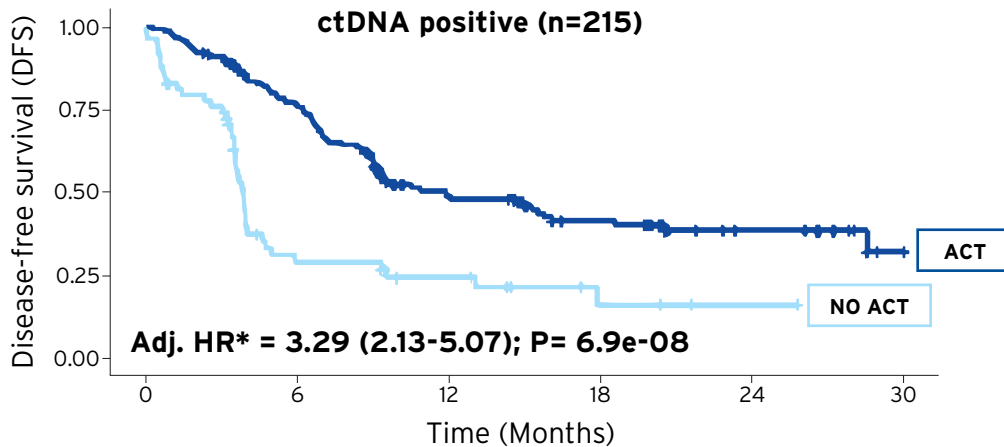


Signatera can inform treatment decisions

Stage II-III CRC patients who **remain ctDNA negative** show **no benefit** from additional **adjuvant chemotherapy (ACT)** 36 months after surgery²



Stage II-III CRC patients who **remain ctDNA positive** **benefit** from **ACT**, with 37% disease-free survival vs. only 16% in those with no ACT 24 months after surgery²



References

1. Natera, LifeLabs research and analysis
2. Kotani D, et al. Circulating tumor (ct)DNA as a prognostic biomarker in patients (pts) with resected colorectal cancer (CRC): an updated 24 months (mos) disease free survival (DFS) analysis from GALAXY study (CIRCULATE-Japan). ESMO. 2023.

*adjusted for age, gender, MSI, pathological stage, and performance status

AUTHORIZED DISTRIBUTOR



Signatera™
Residual disease test (MRD)

LifeLabs® is an authorized distributor of Natera's Signatera™ in Canada. The content has not been reviewed by nor endorsed by Natera, Inc. LifeLabs is solely responsible for maintaining the content according to Natera partnership guidelines as well as all legal and regulatory requirements in Canada. Natera™ is CAP accredited and ISO 13485 and CLIA certified. Natera™ and Signatera™ are trademarks of Natera Inc., are used with permission and comply with Natera™ Branding Guidelines. LifeLabs Genetics is an authorized collector of Signatera™ test samples and distributor of Signatera™ test reports in Canada. Natera™ and LifeLabs® respectively will exercise all reasonable skill and care in the collection, transportation, handling and analyzing of Signatera™ test samples and production of Signatera™ test reports but neither guarantee nor warrant the production of a particular test result or report. LifeLabs is a registered trademark and LifeLabs Genetics is a trademark of LifeLabs LP. LifeLabs LP © LifeLabs 2024.



LifeLabs Genetics Signatera™ CRC Brochure | VER 1.2 JUNE 2024